



MyNCBI Public Access + Grants

Updated 2020.03.06

<https://www.ncbi.nlm.nih.gov/pubmed>

<https://www.ncbi.nlm.nih.gov/myncbi/>

<https://www.ncbi.nlm.nih.gov/books/NBK53595/>

NIH Compliance requirements

- Public access is mandatory for all publications that were in part supported by NIH
- To list a grant in an NIH progress report, it must be public access compliant
 - In myNCBI, paper should be linked to the grant, and have either green or yellow status
 - Green is compliant
 - Blue is still in process, and *within 3 month of official publication*
- The following slides show how to add citations to your bibliography, link to grants, and start the public access compliance
 - Some journals will upload manuscripts themselves, but most will require action on the part of the authors.
- This process should be started as soon as a citation appears in PubMed
 - If it does not automatically show up in PubMed (depends on journal), it can be manually added

Click on "Sign in to NCBI"

Format: Abstract

J Acoust Soc Am. 2018 Apr;143(4):EL248. doi: 10.1121/1.5030134.

Magnetic resonance imaging based anatomical assessment of tongue impairment due to amyotrophic lateral sclerosis: A preliminary study.

Lee E¹, Xing F¹, Ahn S¹, Reese TG², Wang R², Green JR³, Atassi N⁴, Wedeen VJ², El Fakhri G¹, Woo J¹.

Author information

Abstract

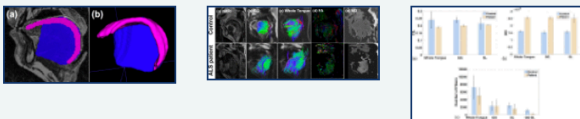
Amyotrophic Lateral Sclerosis (ALS) is a neurological disorder, which impairs tongue function for speech and swallowing. A widely used Diffusion Tensor Imaging (DTI) analysis pipeline is employed for quantifying differences in tongue fiber myoarchitecture between controls and ALS patients. This pipeline uses both high-resolution magnetic resonance imaging (hMRI) and DTI. hMRI is used to delineate tongue muscles, while DTI provides indices to reveal fiber connectivity within and between muscles. The preliminary results using five controls and two patients show quantitative differences between the groups. This work has the potential to provide insights into the detrimental effects of ALS on speech and swallowing.

PMID: 29716267 PMCID: PMC5895467 DOI: 10.1121/1.5030134

Free PMC Article



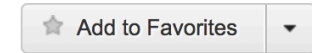
Images from this publication. See all images (3) Free text



Full text links



Save items



Similar articles

Strain Map of the Tongue in Normal and ALS Speech Patter [Proc SPIE Int Soc Opt Eng. 2018]

Interhemispheric connectivity in amyotrophic lateral sclerosis: A near-i [Neuroimage Clin. 2016]

A Bayesian approach to distinguishing interdigitated [Comput Med Imaging Graph. 2015]

Review Diagnostic accuracy of diffusion tensor imaging in amyotrophic latera [Acad Radiol. 2013]

Review [Magnetic resonance imaging in patients of amyotrophic lateral scleros [Brain Nerve. 2009]

See reviews...

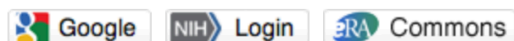
See all...

Related information

MedGen

Sign in to NCBI

Sign in with



[See more 3rd party sign in options](#)

OR

Sign in directly to NCBI

Keep me signed in

Sign In

[Forgot NCBI username or password?](#)

[Register for an NCBI account](#)

Click on “eRA Commons” to sign in :

My NCBI retains user information and database preferences to provide customized services for many NCBI databases.

[YouTube](#) [My NCBI Overview](#)

- Save searches & automatic e-mail alerts
- Display format preferences
- Filter options
- My Bibliography & NIH public access policy compliance
- [SciENcy](#): a researcher biosketch profile service
- Highlighting search terms
- Recent activity searches & records for 6 months
- LinkOut, document delivery service & outside tool selections

NIH funded investigator?

Extramural NIH-funded investigators looking for NIH Public Access Compliance tools can sign in with either "eRA Commons" or "NIH Login". Use your eRA Commons credentials on the subsequent sign in page. Once signed in, navigate to the My Bibliography section.

Documentation for using these features is located in the [Managing Compliance to the NIH Public Access Policy](#) section of the NCBI Help Manual.

Information about the NIH Public Access Policy is located at <https://publicaccess.nih.gov>.

Account Troubleshooting FAQ

[Expired email confirmation link message](#)

[Multiple My NCBI accounts](#)

[Link eRA Commons, University, or other account to your NCBI account](#)



Enter login information for eRA Commons and log in

User Name:

Password:

[Change Password](#)

Log in

OR



Insert your PIV card into your smart card reader before attempting to login.

For more information visit <http://smartcard.nih.gov>.

Log in

You will then be redirected to the pubmed entry

Warning Notice

- This warning banner provides privacy and security notices consistent with applicable federal laws, directives, and other federal guidance for accessing this Government system, which includes (1) this computer network, (2) all computers connected to this network, and (3) all devices and storage media attached to this network or to a computer on this network.
- This system is provided for Government-authorized use only.
- Unauthorized or improper use of this system is prohibited and may result in disciplinary action and/or civil and criminal penalties.
- Personal use of social media and networking sites on this system is limited as to not interfere with official work duties and is subject to monitoring.
- By using this system, you understand and consent to the following:
 - The Government may monitor, record, and audit your system usage, including usage of personal devices and email systems for official duties or to conduct HHS business. Therefore, you have no reasonable expectation of

Format: Abstract

New items were added to your bibliography. [Edit your bibliography.](#)

J Acoust Soc Am. 2018 Apr;143(4):EL248. doi: 10.1121/1.5030134.

Magnetic resonance imaging based anatomical assessment of tongue impairment in amyotrophic lateral sclerosis: A preliminary study.

Lee E¹, Xing F¹, Ahn S¹, Reese TG², Wang R², Green JR³, Atassi N⁴, Wedeen VJ², El Fakhri G¹, Woo J¹.

Author information

Abstract

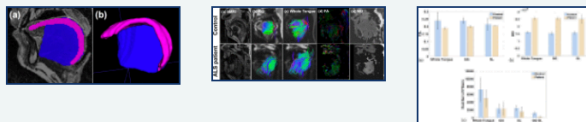
Amyotrophic Lateral Sclerosis (ALS) is a neurological disorder, which impairs tongue function for speech and swallowing. A widely used Diffusion Tensor Imaging (DTI) analysis pipeline is employed for quantifying differences in tongue fiber myoarchitecture between controls and ALS patients. This pipeline uses both high-resolution magnetic resonance imaging (hMRI) and DTI. hMRI is used to delineate tongue muscles, while DTI provides indices to reveal fiber connectivity within and between muscles. The preliminary results using five controls and two patients show quantitative differences between the groups. This work has the potential to provide insights into the detrimental effects of ALS on speech and swallowing.

PMID: 29716267 PMCID: [PMC5895467](#) DOI: [10.1121/1.5030134](#)

Free PMC Article



Images from this publication. See all images (3) Free text



Send to

Choose Destination

- File
- Collections
- Order
- Citation manager
- Clipboard
- E-mail
- My Bibliography

Add to My Bibliography

PMC Full text FREE

Similar articles

Strain Map of the Tongue in Normal and ALS Speech Patter [Proc SPIE Int Soc Opt Eng. 2018]

Interhemispheric connectivity in amyotrophic lateral sclerosis: A near-i [Neuroimage Clin. 2016]

A Bayesian approach to distinguishing interdigitated [Comput Med Imaging Graph. 2015]

Review Diagnostic accuracy of diffusion tensor imaging in amyotrophic latera [Acad Radiol. 2013]

Review [Magnetic resonance imaging in patients of amyotrophic lateral scleros [Brain Nerve. 2009]

See reviews...

See all...

Related information

MedGen

Click on "My NCBI" to get to the bibliographies

Format: Abstract

New items were added to your bibliography. [Edit your bibliography.](#)

J Acoust Soc Am. 2018 Apr;143(4):EL248. doi: 10.1121/1.5030134.

Magnetic resonance imaging based anatomical assessment of tongue impairment due to amyotrophic lateral sclerosis: A preliminary study.

Lee E¹, Xing F¹, Ahn S¹, Reese TG², Wang R², Green JR³, Atassi N⁴, Wedeen VJ², El Fakhri G¹, Woo J¹.

Author information

Abstract

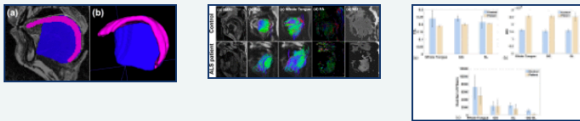
Amyotrophic Lateral Sclerosis (ALS) is a neurological disorder, which impairs tongue function for speech and swallowing. A widely used Diffusion Tensor Imaging (DTI) analysis pipeline is employed for quantifying differences in tongue fiber myoarchitecture between controls and ALS patients. This pipeline uses both high-resolution magnetic resonance imaging (hMRI) and DTI. hMRI is used to delineate tongue muscles, while DTI provides indices to reveal fiber connectivity within and between muscles. The preliminary results using five controls and two patients show quantitative differences between the groups. This work has the potential to provide insights into the detrimental effects of ALS on speech and swallowing.

PMID: 29716267 PMCID: PMC5895467 DOI: 10.1121/1.5030134

Free PMC Article



Images from this publication. See all images (3) Free text



Full text links



Save items



Similar articles

Strain Map of the Tongue in Normal and ALS Speech Patter [Proc SPIE Int Soc Opt Eng. 2018]

Interhemispheric connectivity in amyotrophic lateral sclerosis: A near-i [Neuroimage Clin. 2016]

A Bayesian approach to distinguishing interdigitated [Comput Med Imaging Graph. 2015]

Review Diagnostic accuracy of diffusion tensor imaging in amyotrophic latera [Acad Radiol. 2013]

Review [Magnetic resonance imaging in patients of amyotrophic lateral scleros [Brain Nerve. 2009]

See reviews...

See all...

Related information

MedGen

My NCBI

[Customize this page](#) | [NCBI Site Preferences](#) | [Video Overview](#) | [Help](#)

Search NCBI databases

Search : PubMed

Search

Hint: clicking the "Search" button without any terms listed in the search box will transport you to that database's homepage.

Saved Searches

Search Name	What's New	Last Searched
PubMed Searches		
MedPhys,PMB,RedJ		73 13 days ago

[Manage Saved Searches »](#)

My Bibliography

Your bibliography contains 71 items.

Share your bibliography with this URL:

<https://www.ncbi.nlm.nih.gov/myncbi/kira.grogg.1/bibliography/public/>

[Manage My Bibliography »](#)

Manage all citations saved to my list

Collections

Collection Name	Items	Settings/Sharing	Type
Citations for papers I have authored (public list)			

[Manage Collections »](#)

Recent Activity

Filters

Filters for: PubMed

You do not have any active filters for this database.
[Add filters for the selected database.](#)



My Bibliography

Kira Grogg's Bibliography 1 0 4 1 1 1 70 70

[My Bibliography Help](#)

MyNCBI | ERA linked account

Share your bibliography with this URL: <https://www.ncbi.nlm.nih.gov>

[Make bibliography private](#)

Manage citations Add citations Filter citations

Status of all citations

- (?) Unknown
- (!) Uncompliant
- (→) In process
- (✓) Citation is compliant
- (○) Public access not applicable

1 of 2

Search

77 citations, Sort by newest to oldest

Guehl NJ, Pelletier-Galarneau M, Wooten DW, Guerrero JL, Kas A, Normandin MD, Fakhri GE, Alpert NM. [Preclinical Validation of a Single-Scan Rest/Stress Imaging Technique for ¹³N-Ammonia Positron Emission Tomography Cardiac Perfusion Studies](#). Circ Cardiovasc Imaging. 2020 Jan;13(1):e009407. doi: 10.1161/CIRCIMAGING.119.009407. Epub 2020 Jan 21. PubMed PMID: 31959009; NIHMSID:NIHMS1548956.

Public Access Compliance

Not defined [\[Edit Status\]](#)

+ Add Award

Click on "Add Award" to associated funding

Rodríguez-Rangel S, Bravin AD, Ramos-Torres KM, Brugarolas P, Sánchez-Rodríguez JE. [Structure-activity relationship studies of four novel 4-aminopyridine K⁺ channel blockers](#). Sci Rep. 2020 Jan 9;10(1):52. doi: 10.1038/s41598-019-56245-w. PubMed PMID: 31919372; PubMed Central PMCID: PMC6952366.

Public Access Compliance

Complete. PMCID: [PMC6952366](#)

[1 Award](#)

Gong K. Han P. El Fakhri G. Ma C. Li O. [Arterial spin labeling MR image denoising and](#)

Public Access Compliance

Assign Awards

Use the checkboxes to assign awards to the selected citations:

NIH Awards

Search/Add other awards

Awards not in the list can be searched for

My awards:

- K07 CA193916 - Precision Personalized Proton Therapy through Advanced Imaging Technology

Other awards:

- C06 CA059267 - PROTON THERAPY RESEARCH AND TREATMENT CENTER
- K01 AG050711 - Tau Quantitation in AD with High Resolution MRI and PET
- K08 HL128802 - Regulation of pulmonary vascular cell redox state by L-2-hydroxyglutarate
- K23 EB019023 - In Vivo Visualization of TAU and Amyloid-Beta Networks for Early AD Detection

Select all applicable awards

They don't necessarily have to be listed on the published paper

Close

(?) Red question mark means no associated awards, compliance status unknown/has not been started yet. If it is a recent paper (published within 3 months), it can easily be put into compliance

NIHMSID:NIHMS1548956.

Public Access Compliance ?
Not defined [\[Edit Status\]](#)
[+ Add Award](#)

(✓) Green is good! Paper is compliant and has a PMCID

Structure-activity relationship studies of four novel 1-amino-2-imidazole blockers. Sci Rep. 2020 Jan 9;10(1):52. doi: 10.1038/s41598-019-56245-w. PubMed PMID: 31919372; PubMed Central PMCID: PMC6952366.

Public Access Compliance ✓
Complete. PMCID: [PMC6952366](#)
[1 Award](#)

(→) Blue arrow means manuscripts have an NIHMS IDs and are within 3 months of publication. This is acceptable for progress reports. (It does not necessarily mean that the initial submission process is complete!)

Public Access Compliance →
In process at NIHMS. NIHMS ID: [NIHMS1068146](#) [\[Edit Status\]](#)
[6 Awards](#)

Associated awards

(○) Gray circle is okay. Paper was not NIH funded or not peer reviewed (see full set of rules for when this is applicable)

[Other citations](#) [Private](#)

Public Access Compliance ○
Not applicable- Exempted. [\[Edit Status\]](#)
[+ Add Award](#)

(!) Red exclamation is bad! Paper is NOT compliant

There is an NIH award associated with the paper, but does not have an PMCID 3 months post publication

If it has an NIHMS ID, the compliance process has been started, but they are awaiting review by NIH or Authors

Public Access Compliance !
Non-compliant. No PMCID 3 months post publication. [\[Edit Status\]](#)
[1 Award](#)

My Bibliography

Kira Grogg's Bibliography 4 4 2 61

| linked account

Share your bibliography with this URL:

<https://www.ncbi.nlm.nih.gov/myncbi/kira.grogg.1/bibliography/public/>

Page 1 of 1

Manage citations Add citations Filter citations

Filtered by: Public Access Compliance: In progress [Clear filters](#)

2 citations, Sort by newest to oldest

Some journals (e.g. PMB) will submit the paper for you (“Method B”). Some will submit it for you only if you opt in. It is important to check that the journal has followed through

light
S
ID:

Public Access Compliance

Method B Journal - Pending PMC Submission [\[Edit Status\]](#)

[1 Award](#)

Xin Q, Ortiz-Terán L, Diez I, Perez DL, Ginsburg J, El Fakhri G, Sepulcre J. [Sequence Alterations of Cortical Genes Linked to Individual Connectivity of the Human Brain](#). Cereb Cortex. 2018 Oct 11;. doi: 10.1093/cercor/bhy262. [Epub ahead of print] PubMed PMID: 30307489.

[Other citations](#) [Private](#)

Public Access Compliance

PMC Journal - In Process [\[Edit Status\]](#)

[2 Awards](#)

Filtered by:

Edit Public Access Compliance Status

At least one NIH grant is associated with this citation.

Access Policy requires scientists to submit final, peer-reviewed journal articles supported by NIH funds to the digital archive PubMed Central upon acceptance for publication. (See [Applicability](#) for full details.) Please submit the final manuscript serials form indicating that this publication is exempt from the policy.

This citation has been submitted to NIHMS and is being processed. Please make a new selection below.

- Begin submission in the NIHMS.
- This citation has been submitted. NIHMS ID: [1025161](#)
- Arrangements have been made for a [publisher on this list](#) to send the final published article directly to PubMed Central. ([Method B](#))
- This citation does not need to be submitted under NIH Public Access because:
 - Publication was not peer reviewed.
 - Publication was accepted for publication before April 7, 2008.
 - Publication was written in a script other than Latin (e.g., Russian, Japanese).
 - Publication was not [directly supported by](#) NIH funds active in FY08 or beyond.

If there is no NIHMS ID, then select "Begin submission in the NIHMS"

(you might have to repeat this process if the first time you are not logged into eRA commons)

To Check status of submitted manuscript, click on the NIHMS ID link

Save

Cancel

Submit Manuscript - NIHMS

nihms.nih.gov/submission/1573239/

NIH National Institutes of Health

Kira Grogg

Manuscript Submission My Manuscripts About Help

Submit Manuscript

Title

Populate from:

PubMed

DOI

My Bibliography

or

Enter manually

Manuscript Title

I PET/CT system using the national electrical manufacturers association NU 2-2012 Standard.

Journal Title

Medical physics

PubMed ID (optional)

31069816 [Remove](#)

DOI (optional)

10.1002/mp.13576 [Remove](#)

[Cancel Submission](#) [Next](#)

At beginning of submission, title and journal should be automatically filled in or you can search in PubMed for the publication

Submit Manuscript

nihms.nih.gov/submission/1573239/

NIH National Institutes of Health

Manuscript Submission

Submit Manuscript

Manuscript Title: Performance evaluation of the 5-Ring GE Discovery MI PET/CT system using t
Journal Title: Medical physics

Funding

Award ID	Title	PI
K07 CA193916	Precision Personalized Proton Therapy through Advanced Imaging Technology	Kira Grogg ✕

[My Funding](#) [Search Funding](#)

[Help](#) [Cancel Submission](#) [Next](#)

Submit Manuscript - NIHMS

nihms.nih.gov/submission/1573239/#cancel

NIH National Institutes of Health

Kira Grogg

MY FUNDING ✕

K07 CA193916 Precision Personalized Proton Therapy through Advanced Imaging Technology

[Cancel](#) [Add](#)

You will automatically be shown funding you are associated with

Submit Manuscript - NIHMS

nihms.nih.gov/submission/1573239/#cancel

NIH National Institutes of Health Kira Grogg

SEARCH FUNDING

Award Number	Awardee First Name	Awardee Last Name		
<input type="text"/>	<input type="text"/>	<input type="text" value="El Fakhri"/>	<input type="button" value="Search"/>	<input type="button" value="Clear"/>

Found 1 awardee(s), 20 award(s)

Georges El Fakhri MASSACHUSETTS GENERAL HOSPITAL

- P41 EB022544 Center for Molecular Imaging Technology and Translation (CMITT)
Center for Molecular Imaging Technology and Translation (CMITT).Administrative Supplement to P41EB022544
- R01 CA165221 Quantitative Oncologic PET-MR
- R01 EB005876 Quantitative Simultaneous Dual Isotope SPECT
- R01 HL110241 Quantitative Cardiac PET
- R01 HL137230 PET/MR Mapping of Myocardial Membrane Potential
- R13 EB019862 2014 IEEE Nuclear Science Symposium and Medical Imaging Conference

Can also search for funding from another awardee and select all applicable grants


Submit Manuscript - NIHMS

nihms.nih.gov/submission/1573239/#cancel

Files

Upload all [files](#) associated with the above-listed title, including any referenced figure, table, video, or supplementary files.

Manuscript [Browse your computer](#) or drag and drop your file(s) here



Preview not available

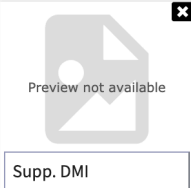
Manuscript DMI

Figure [Browse your computer](#) or drag and drop your file(s) here

Table [Browse your computer](#) or drag and drop your file(s) here

Video [Browse your computer](#) or drag and drop your file(s) here

Supplementary Material [Browse your computer](#) or drag and drop your file(s) here




Preview not available

Supp. DMI

Upload the *accepted version* (not the final published version) of the manuscript. If there are figures, tables and supplements not included in the main manuscript, upload those as well

Submit Manuscript - NIHMS

nihms.nih.gov/submission/1573239/#cancel



Preview not available


Manuscript DMI

Figure [Browse your computer](#) or drag and drop your file(s) here

Table [Browse your computer](#) or drag and drop your file(s) here

Video [Browse your computer](#) or drag and drop your file(s) here

Supplementary Material [Browse your computer](#) or drag and drop your file(s) here



Preview not available

Supp. DMI

By checking this box I certify that this manuscript submission includes all referenced figures, tables, videos, and supplementary material.


[? Help](#) [Cancel Submission](#) [Next](#)

You must check the box to certify that all material is included


Submit Manuscript - NIHMS


nihms.nih.gov/submission/1573239/#cancel

Submit Manuscript

Manuscript Title: Performance evaluation of the 5-Ring GE Discovery MI PET/CT system using the national electrical manufacturers association NU 2-2012 Standard.  Edit

Journal Title: Medical physics


Funding: K07 CA193916  Edit

2 Files  Edit


Reviewer and Release Delay (Embargo)

Please designate a [Reviewer](#) to complete the [initial approval](#) step for this submission.

Reviewer

Self 

Release Delay (Embargo)

12 months 

[Cancel Submission](#) [Next](#)

Screenshot coming soon

Set the reviewer, which should be someone that is an author on the paper (preferably first or last).

The reviewer will set the embargo for how long to wait (usually one year) until the public access version is available to the public.

Release day is relative to original publication date



My Manuscripts [?]

Submit New Manuscript

Search by NIHMSID, PMID, or PMCID



Needs Your Attention 0

In Process 1

Available to Claim 0

Awaiting Citation Data 1

Under Embargo 2

Available in PMC 11

NIHMSID

Title

Status

1573239

[Performance evaluation of the 5-Ring GE
Discovery MI PET/CT system using the national
electrical manufacturers association NU 2-2012
Standard](#)

NIHMS Submission Review
and File Preparation

There is one manuscript in process. Once PMC documents are created, they will be sent to the designated reviewer to approve and make public 1 year after publication
Any manuscripts that need action (such as approval) will be under "Needs Your Attention"
Two manuscripts have been approved and given PMCIDs but are in the embargo period
Eleven manuscripts I have submitted are already publicly accessible in PMC



My Manuscripts [?]

Submit New Manuscript

Search by NIHMSID, PMID, or PMCID



- Needs Your Attention **0**
- In Process **0**
- Available to Claim **0**
- Awaiting Citation Data** **1**
- Under Embargo **2**
- Available in PMC **11**

NIHMSID	Title	Status
1068146	Arterial Spin Labeling MR Image Denoising and Reconstruction Using Unsupervised Deep Learning	Pending Final Citation Data

<https://www.nihms.nih.gov/submission/>

Check status of any manuscripts that are in the submission pipeline.

Click on title for submission progress



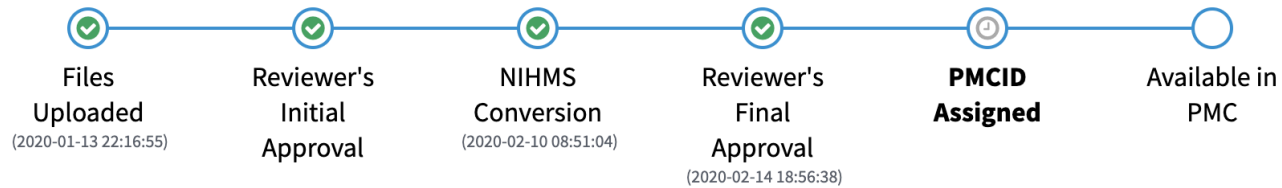
Manuscript Information

Manuscript Title:	Arterial Spin Labeling MR Image Denoising and Reconstruction Using Unsupervised Deep Learning
Journal Title:	NMR in biomedicine
Release Delay (Embargo):	12 months
NIHMSID:	1068146
PMID:	31865615

<https://www.nihms.nih.gov/submission/>
 Submission progress and who needs to take what action

Submission Progress

[Learn more about the NIHMS submission process](#)



Associated Persons

3936. doi: 10.1158/10
NIH Public Access Con
NIHMS1501959
NIH Funding:
R01 HL130336 - Targ
K08 HL128802 - Reg
[Add or delete award](#)

6: Blackberg L, Sajedi S.
[processed LYSO:Ce f](#)
6560/ab1213. [Epub a

NIH Public Access Con
NIH Funding:
R03 EB020762 - Nov
R21 EB023391 - Hig
[Add or delete award](#)

7: Park GK, Lee JH, Lev
[Sequential Cell Tracki](#)
10.1002/adma.201806

NIH Public Access Con
NIH Funding:
R01 EB022230 - Ima
[Add or delete award](#)

8: Sepulcre J, Grothe M,
Fakhri G, Sperling RA
[cortex](#). Nat Med. 2018
PMID: 30374196.

NIH Public Access Con

At least one NIH grant is associated with this citation.

The NIH Public Access Policy requires scientists to submit final, peer-reviewed journal manuscripts that arise from NIH funds to the digital archive PubMed Central upon acceptance for publication. (See [Determine Applicability](#) for full details.) Please submit the final manuscript sent to your publisher or indicate that this publication is exempt from the policy.

We do not have a record of this citation in NIH Manuscript Submission system (NIHMS). Please choose from the following:

- Begin submission in the NIHMS.
- This citation has been submitted. NIHMS ID:
- Arrangements have been made for a [publisher on this list](#) to se
published article directly to PubMed Central. ([Method B](#))
- This citation does not need to be submitted under NIH Public Access
because:
 - Publication was not peer reviewed.
 - Publication was accepted for publication before April 7, 2008.
 - Publication was written in a script other than Latin (e.g., Russian, Japanese).
 - Publication was not [directly supported by](#) NIH funds active in FY08 or beyond.

[Save & Close](#)

[Cancel](#)

ed by other PIS
d by NIHMS
d to my Awards

[filters](#)

[Clear all filters](#)

Once the NIHMS submission has been started, you can click "Edit Status" next to the citation, and in the dialog box enter the assigned NIHMS ID into this field, then Save & Close