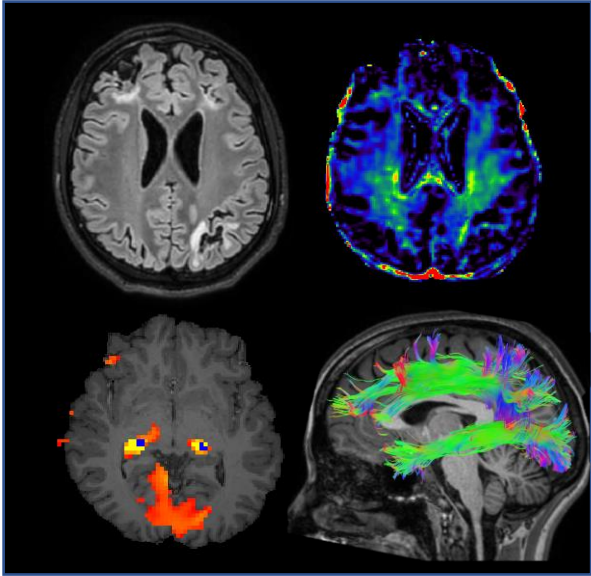


# Help us study the effects of brain injury on brain development & visual perception!

Mass General Brigham IRB  
APPROVAL EFFECTIVE DATE  
2/19/2025



Help us answer important questions like:

*How does brain injury during early childhood impact long-term brain development?*

*What is the link between early brain injury and Cerebral Visual Impairments (CVIs)?*

*How do CVIs impact activity, participation, and quality of life?*

We are seeking participants between the ages of 10 – 65 for a research study looking at the link between acquired or early brain injury and visual perceptual abilities.

The study uses a mixture of interview questions, computer-based tests, and magnetic resonance imaging (MRI) to determine the relationship between brain structure and visual processing abilities.

*Participation in all phases of the study is **not** mandatory, and total compensation is dependent upon degree of participation.*

Eligibility criteria:

- 1) Evidence of an acquired or early developmental brain injury, stroke, trauma, genetic disorder, or preterm birth (i.e. prior to 37 weeks gestation)
- 2) Visual acuity better than 20/100

We are also seeking volunteers with no history of brain injury or visual impairment to serve as controls.

If you are interested in participating, or would like more information, please reach out to us via email to: [cbauer@mgh.harvard.edu](mailto:cbauer@mgh.harvard.edu)

The Bauer Laboratory of  
Neuroimaging and Vision Science  
Massachusetts General Hospital,  
Harvard Medical School

